

Link do produktu: <http://www.novazym.sklep.pl/vetpcr-lyme-disease-96d-p-755.html>



# VetPCR? Lyme disease (96D)

Numer katalogowy

**VET-B027-96D**

## Opis produktu

### Borrelia burgdorferi PCR Detection Kit

Lyme borreliosis, the most common vector-borne disease in the northern hemisphere, is caused by bacteria *Borrelia burgdorferi*. The disease is multisystemic, affecting mainly the skin, nervous system, heart and joints. In Europe, the vector of the disease is the tick *Ixodes ricinus*, whereas in the United States of America, two primary tick vectors exist, namely: *I. scapularis*, and *I. pacificus*. A number of domestic animals (dogs, horses, sheep and cattle) have contracted Lyme disease. Wild animals (mice, voles, rabbit, deer, racoons, and birds) are known to be reservoir hosts.

VetPCR? Lyme disease Detection Kit is the direct detection of *Borrelia burgdorferi* on the basis of a genetic database, so it can diagnose very fast and accurately. It can amplify only specific gene using the PCR (Polymerase Chain Reaction) method, and take only 3 hours for detection. Therefore, it is a very fast, accurate, reliable technique.

### Characteristics

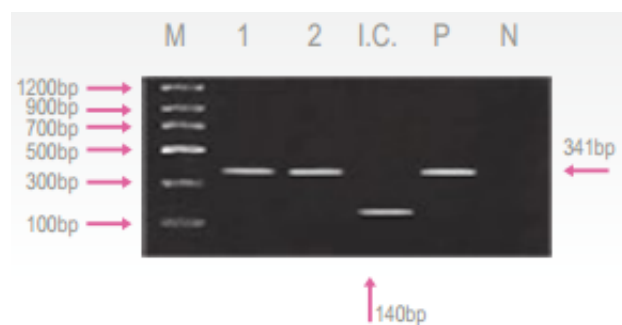
Ready to use : only DNA template and D.W. are needed. Easy and speed protocol. Stable for 1 year at -20°C. Time-saving and cost-effective.

### Contents

Kit	Quantity 48	Quantity 96	Package
VetPCR™ Lyme disease Premixture	1	1	Vial
PCR Internal Control	1	1	Vial
DNase/RNase free water	1	1	Vial
Lyme disease PCR Positive control	1	1	Vial
PCR Negative control	1	1	Vial
Mineral Oil Solution	1	1	Vial
Brig™ Molecular Weight marker	1	1	Vial
DNA purification kit	50	100	Test

### Interpretation of the Test Result

Expected PCR product size : 341bp



**Fig. 1 Result:**

Lane M: Brig? Molecular Weight Marker

Lane 1~2: Lyme disease Positive samples

Lane I.C.: Internal control

Lane P: Positive control

Lane N: Negative control