

Link do produktu: <http://www.novazym.sklep.pl/vetpcr-acentrale-96d-p-737.html>



VetPCR? A.centrale (96D)

Numer katalogowy

VET-B018-96D

Opis produktu

Anaplasma centrale PCR Detection Kit

Anaplasma centrale is a Gram-negative bacterium of the Rickettsiales order lacking a traditional cell wall. Infection causes a mild form of anaplasmosis in cattle and has been used as a vaccine against A.marginale. It occurs primarily in warm tropical and subtropical areas. A. centrale is most commonly transmitted by ticks such as Boophilus spp. and Dermacentor spp. Cattle infection presents with fever, loss of appetite, jaundice, anemia and respiratory problems.

VetPCR? A.centrale Detection Kit is the direct detection of Anaplasma centrale on the basis of a genetic database, so it can diagnose very fast and accurately. It can amplify only specific gene using the PCR (Polymerase Chain Reaction) method, and take only 3 hours for detection. Therefore, it is a very fast, accurate and reliable technique.

Characteristics

Ready to use : only DNA template and D.W. are needed. Easy and speed protocol. Stable for 1 year at -20°C. Time-saving and cost-effective.

Contents

Kit	Quantity 48	Quantity 96	Package
VetPCR™ A.centrale Premixture	1	1	Vial
PCR Internal Control	1	1	Vial
DNase/RNase free water	1	1	Vial
A.centrale PCR Positive control	1	1	Vial
PCR Negative control	1	1	Vial
Mineral Oil Solution	1	1	Vial
Brig™ Molecular Weight marker	1	1	Vial
DNA purification kit	50	100	Test

Interpretation of the Test Result

Expected PCR product size : 275bp

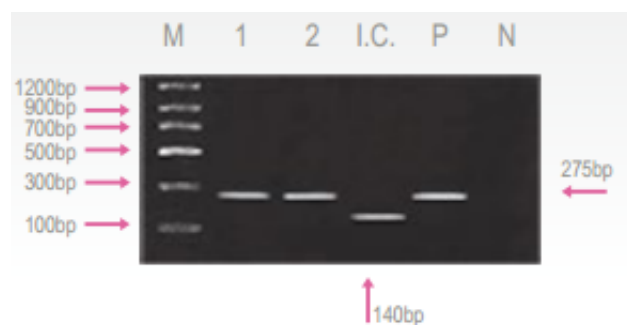


Fig. 1 Result:

Lane M: Brig? Molecular Weight Marker

Lane 1~2: A.centrale Positive samples

Lane I.C.: Internal control

Lane P: Positive control

Lane N: Negative control