

Link do produktu: <http://www.novazym.sklep.pl/vetpcr-spdv-96rxn-p-695.html>



## VetPCR? SPDV (96RXN)

Numer katalogowy

**VET-P005-96R**

### Opis produktu

#### Salmon pancreas disease virus RT-PCR Detection Kit

Pancreas disease in farmed salmonids is commonly associated with infections by salmonid alphavirus or Salmon pancreas disease virus (SPDV). Fish affected presents lesions in the pancreas, including loss of pancreatic exocrine tissue, and fibrosis, cardiac and skeletal muscle myopathies. This disease typically affects the fish post-molts during the first year after they are transferred to sea sites and is reported to spread rapidly among farm fish held in sea cages.

VetPCR? SPDV Detection Kit is the direct detection of Salmon pancreas disease virus on the basis of a genetic database, so it can diagnose very fast and accurately. It can amplify only specific gene using the PCR (Polymerase Chain Reaction) method, and take only 3 hours for detection. Therefore, it is a very fast, accurate, reliable technique.

#### Characteristics

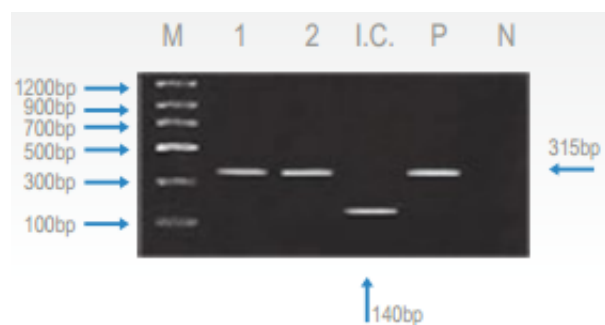
Ready to use : only DNA template and D.W. are needed. Easy and speed protocol. Stable for 1 year at -20°C. Time-saving and cost-effective.

#### Contents

Kit	Quantity 48	Quantity 96	Package
VetPCR™ SPDV RT-PCR Premixture	1	1	Vial
VetPCR™ SPDV PCR Premixture	1	1	Vial
Brig™ RT-PCR solution	1	1	Vial
Biotech™ Transcriptase solution	1	1	Vial
DNase/Rnase free water	1	1	Vial
SPDV PCR Positive control	1	1	Vial
PCR Negative Control	1	1	Vial
PCR Internal Control	1	1	Vial
Mineral Oil solution	1	1	Vial
Brig™ Molecular Weight marker	1	1	Vial
RNA purification kit	50	100	Test

#### Interpretation of the Test Result

Expected PCR product size : 315bp



**Fig. 1 Result:**

Lane M: Brig? Molecular Weight Marker

Lane 1~2: SPDV Positive samples

Lane I.C.: Internal control

Lane P: Positive control

Lane N: Negative control