



VetPCR? PoRV (48R)

Numer katalogowy

VET-S002-48R

Opis produktu

Porcine rubulavirus RT-PCR Detection Kit

Porcine rubulavirus (PoRV) infection or "blue eye" disease is caused by the porcine rubulavirus. This disease is characterized by encephalitis and respiratory disease in piglets, reproductive failure in adult pigs, and occasional corneal opacity in all ages. The clinical signs observed are variable and dependant on the age of the pigs infected.

VetPCR? PoRV Detection Kit is the direct detection of Porcine rubulavirus on the basis of a genetic database, so it can diagnose very fast and accurately. It can amplify only specific gene using the PCR (Polymerase Chain Reaction) method, and take only 3 hours for detection. Therefore, it is a very fast, accurate, reliable technique.

Characteristics

Ready to use : only DNA template and D.W. are needed. Easy and speed protocol. Stable for 1 year at -20°C. Time-saving and cost-effective.

Contents

| KIT | Quantity (48) | Quantity (96) | Package |
|---------------------------------|---------------|---------------|---------|
| VetPCR™ PoRV RT-PCR Premixture | 1 | 1 | Vial |
| VetPCR™ PoRV PCR Premixture | 1 | 1 | Vial |
| Brig™ RT-PCR solution | 1 | 1 | Vial |
| Biotech™ Transcriptase solution | 1 | 1 | Vial |
| DNase/Rnase free water | 1 | 1 | Vial |
| PoRV PCR Positive control | 1 | 1 | Vial |
| PCR Negative Control | 1 | 1 | Vial |
| PCR Internal Control | 1 | 1 | Vial |
| Mineral Oil solution | 1 | 2 | Vial |
| Brig™ Molecular Weight marker | 1 | 1 | Vial |
| RNA purification kit | 50 | 100 | Test |

Interpretation of the Test Result

Expected PCR product size : 213bp

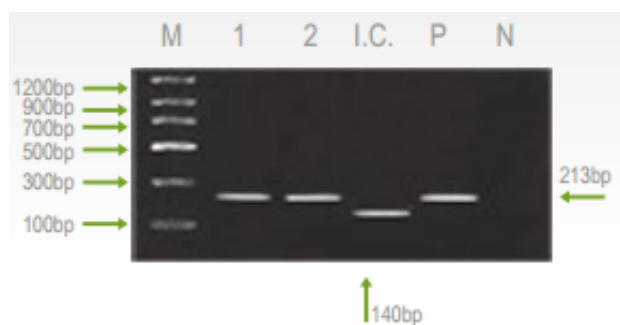


Fig. 1 Result:

Lane M: Brig? Molecular Weight Marker

Lane 1~2: PoRV Positive samples

Lane I.C.: Internal control

Lane P: Positive control

Lane N: Negative control