



VetPCR? CSFV (48R)

Numer katalogowy

VET-S005-48R

Opis produktu

Classical swine fever virus RT-PCR Detection Kit

Classical swine fever (CSF) is a highly contagious and economically significant viral disease of pigs. The symptoms of CSF vary with the strain of virus, and the age and susceptibility of the pigs. The wide range of clinical signs and similarity to other diseases can make classical swine fever challenging to diagnose.

VetPCR? CSFV Detection Kit is the direct detection of Classical swine fever virus on the basis of a genetic database, so it can diagnose very fast and accurately. It can amplify only specific gene using the PCR (Polymerase Chain Reaction) method, and take only 3 hours for detection. Therefore, it is a very fast, accurate, reliable technique.

Characteristics

Ready to use : only DNA template and D.W. are needed. Easy and speed protocol. Stable for 1 year at -20°C. Time-saving and cost-effective.

Contents

| KIT | Quantity (48) | Quantity (96) | Package |
|---------------------------------|---------------|---------------|---------|
| VetPCR™ CSFV RT-PCR Premixture | 1 | 1 | Vial |
| VetPCR™ CSFV PCR Premixture | 1 | 1 | Vial |
| Brig™ RT-PCR solution | 1 | 1 | Vial |
| Biotech™ Transcriptase solution | 1 | 1 | Vial |
| DNase/Rnase free water | 1 | 1 | Vial |
| CSFV PCR Positive control | 1 | 1 | Vial |
| PCR Negative Control | 1 | 1 | Vial |
| PCR Internal Control | 1 | 1 | Vial |
| Mineral Oil solution | 1 | 2 | Vial |
| Brig™ Molecular Weight marker | 1 | 1 | Vial |
| RNA purification kit | 50 | 100 | Test |

Interpretation of the Test Result

Expected PCR product size : 276bp

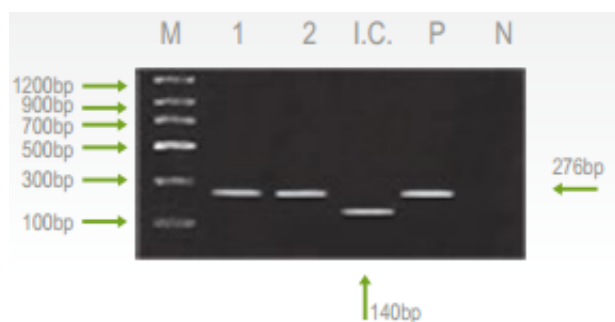


Fig. 1 Result:

Lane M: Brig? Molecular Weight Marker

Lane 1~2: CSFV Positive samples

Lane I.C.: Internal control

Lane P: Positive control

Lane N: Negative control