

Link do produktu: <http://www.novazym.sklep.pl/vetpcr-c-psittaci-abortion-96d-p-764.html>



VetPCR? C. psittaci/C. abortus (96D)

Numer katalogowy

VET-B032-96D

Opis produktu

Chlamydomphila psittaci/abortus PCR Detection Kit

Chlamydomphila psittaci and Chlamydomphila abortus are members of the Chlamydiaceae. These microorganisms are obligate intracellular bacterial parasites responsible for a variety of diseases in humans and animals. C. psittaci causes zoonotic pneumonia in humans and systemic disease in birds (avian chlamydiosis), while C. abortus, causes abortion and fetal death in mammals, including humans. C. abortus is mainly hosted by small ruminants (sheep and goats). It also causes abortion in cattle and pigs. Infections with C. psittaci have also been reported occasionally in mammals including dogs, cats, horses, cattle, and muskrats and infections with C. abortus has also been detected in different seabird species.

VetPCR? C. psittaci/C. abortus Detection Kit is the direct detection of Chlamydomphila psittaci/abortus on the basis of a genetic database, so it can diagnose very fast and accurately. It can amplify only specific gene using the PCR (Polymerase Chain Reaction) method, and take only 3 hours for detection. Therefore, it is a very fast, accurate, reliable technique.

Characteristics

Ready to use : only DNA template and D.W. are needed. Easy and speed protocol. Stable for 1 year at -20°C. Time-saving and cost-effective.

Contents

| Kit | Quantity 48 | Quantity 96 | Package |
|---|----------------|----------------|---------|
| VetPCR™ C. psittaci/C. abortus Premixture | 1 | 1 | Vial |
| PCR Internal Control | 1 | 1 | Vial |
| DNase/RNase free water | 1 | 1 | Vial |
| C. psittaci/C. abortus PCR Positive control | 1 | 1 | Vial |
| PCR Negative control | 1 | 1 | Vial |
| Mineral Oil Solution | 1 | 1 | Vial |
| Brig™ Molecular Weight marker | 1 | 1 | Vial |
| DNA purification kit | 50 | 100 | Test |

Interpretation of the Test Result

Expected PCR product size : 309bp

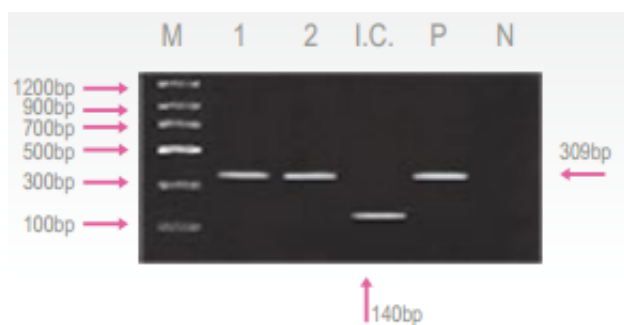


Fig. 1 Result:

Lane M: Brig? Molecular Weight Marker

Lane 1~2: *C. psittaci*/*C. abortus* Positive samples

Lane I.C.: Internal control

Lane P: Positive control

Lane N: Negative control